

FOR LEASE

OFFICE/WAREHOUSE BUILDING

3404 N. ORANGE BLOSSOM TRAIL, ORLANDO



@ SILVER STAR ROAD – 5,625 SF Office/Showroom/Whse

- FRONTAGE on HIGHWAY 441
- CONVENIENTLY LOCATED near LEE Road
- \$3,900/mo. GROSS LEASE (\$8.32psf)
- C.B. Construction
- REAR LOAD Grade Level O.H. DOOR

NEW ROOF

AMPLE PARKING

BUSY HIGHWAY FRONTAGE

CONTACT:

**Jeff Gindi, Broker/Principal
(407) 925-4464**

JeffGindi@ResultsREPartners.com



RESULTS REAL ESTATE PARTNERS, LLC

Licensed Real Estate Brokers

108 Commerce St, Suite 200

Lake Mary, FL 32746

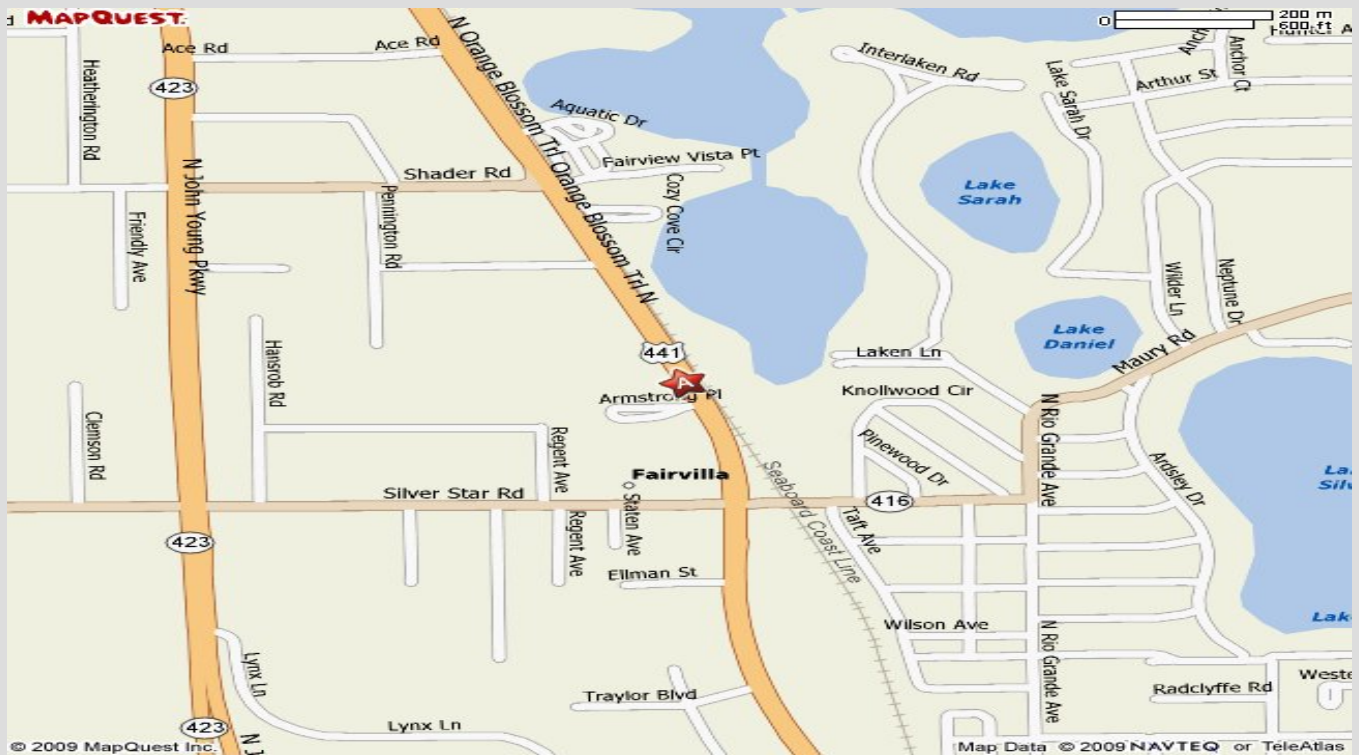
Office (407) 647-0200

Fax (407) 647-0205

www.ResultsREPartners.com

This information is from sources we deem reliable and is subject to prior sale, lease, withdrawal without notice, or change in prices, rates, or conditions. No representation is made as to the accuracy of any information furnished.

AREA MAP



ADDITIONAL FEATURES:

- EXPANSION SPACE AVAILABLE in Complex
- SHORT or LONG TERM LEASES
- 90 % under A/C
- NEW CARPET & FRESH PAINT
- MOVE IN CONDITION

CONTACT:

Jeff Gindi, Broker/Principal
(407) 925-4464

JeffGindi@ResultsREPartners.com



RESULTS REAL ESTATE PARTNERS, LLC

Licensed Real Estate Brokers

108 Commerce St, Suite 200

Lake Mary, FL 32746

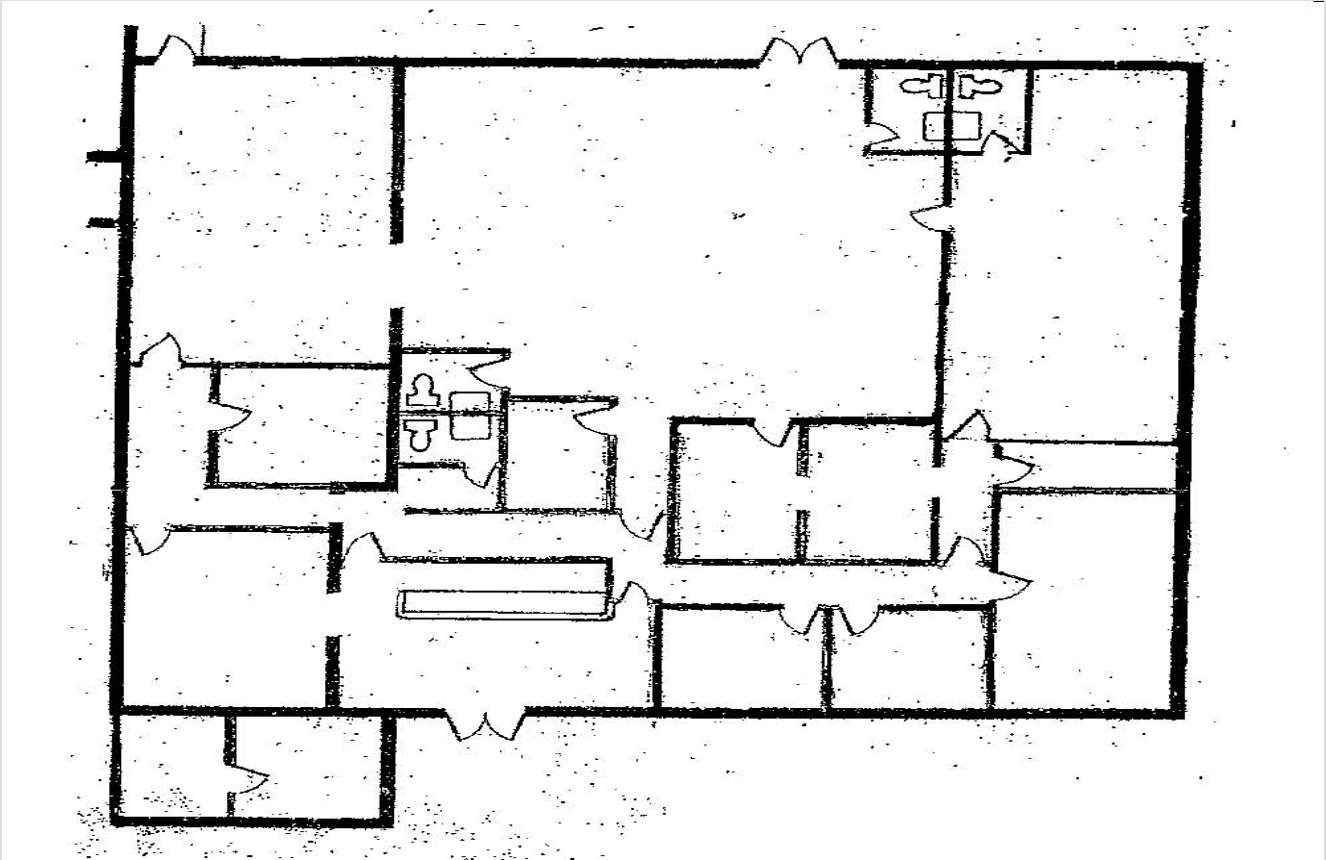
Office (407) 647-0200

Fax (407) 647-0205

www.ResultsREPartners.com

This information is from sources we deem reliable and is subject to prior sale, lease, withdrawal without notice, or change in prices, rates, or conditions.
No representation is made as to the accuracy of any information furnished.

FLOOR PLAN



3404 N. Orange Blossom Trail



RESULTS REAL ESTATE PARTNERS, LLC
Licensed Real Estate Brokers

108 Commerce St, Suite 200
Lake Mary, FL 32746
Office (407) 647-0200
Fax (407) 647-0205

www.ResultsREPartners.com

CONTACT:

Jeff Gindi, Broker/Principal
(407) 925-4464

JeffGindi@ResultsREPartners.com

This information is from sources we deem reliable and is subject to prior sale, lease, withdrawal without notice, or change in prices, rates, or conditions.
No representation is made as to the accuracy of any information furnished.