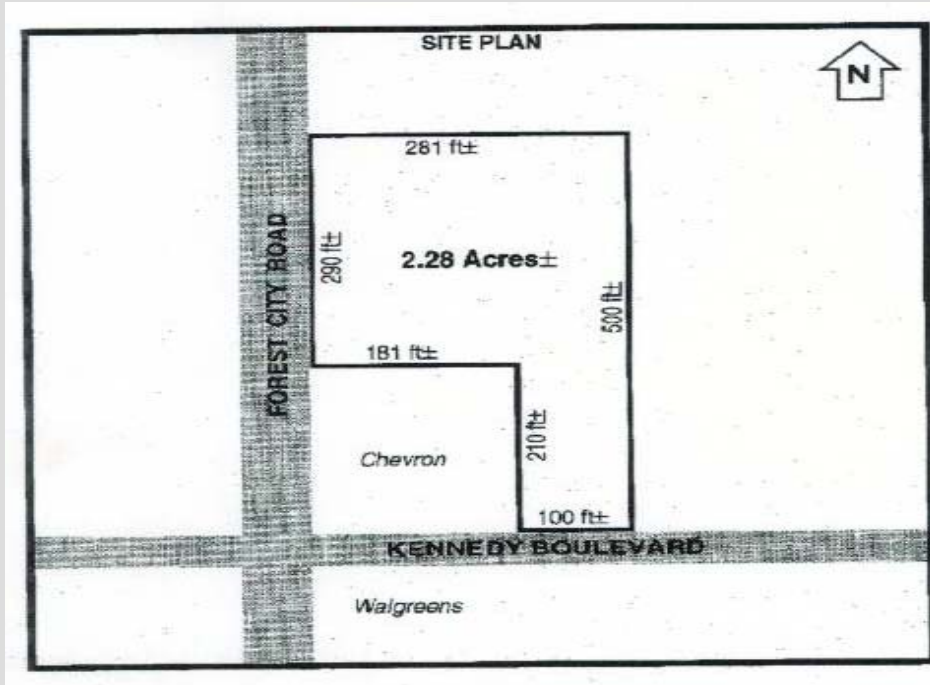


# FOR SALE

6853 Forest City Road Orlando, FL 32810

2.28+/- COMMERCIAL ACRES FOR SALE



**SALE PRICE \$1,200,000**

## PROPERTY FEATURES:

- FRONTAGE OF 290+/- Feet on FOREST CITY ROAD (SR 434)
- AND 100 Feet on KENNEDY BOULEVARD
- GOOD INGRESS AND EGRESS
- 2.28+/- ACRES ZONED C-1, ORANGE COUNTY
- Property WRAPS AROUND Existing CHEVRON STATION
- WALGREENS ON OPPOSITE CORNER

## CONTACT:

**Jeff Gindi, Broker/Principal**  
**(407) 925-4464**  
**JeffGindi@ResultsREPartners.com**

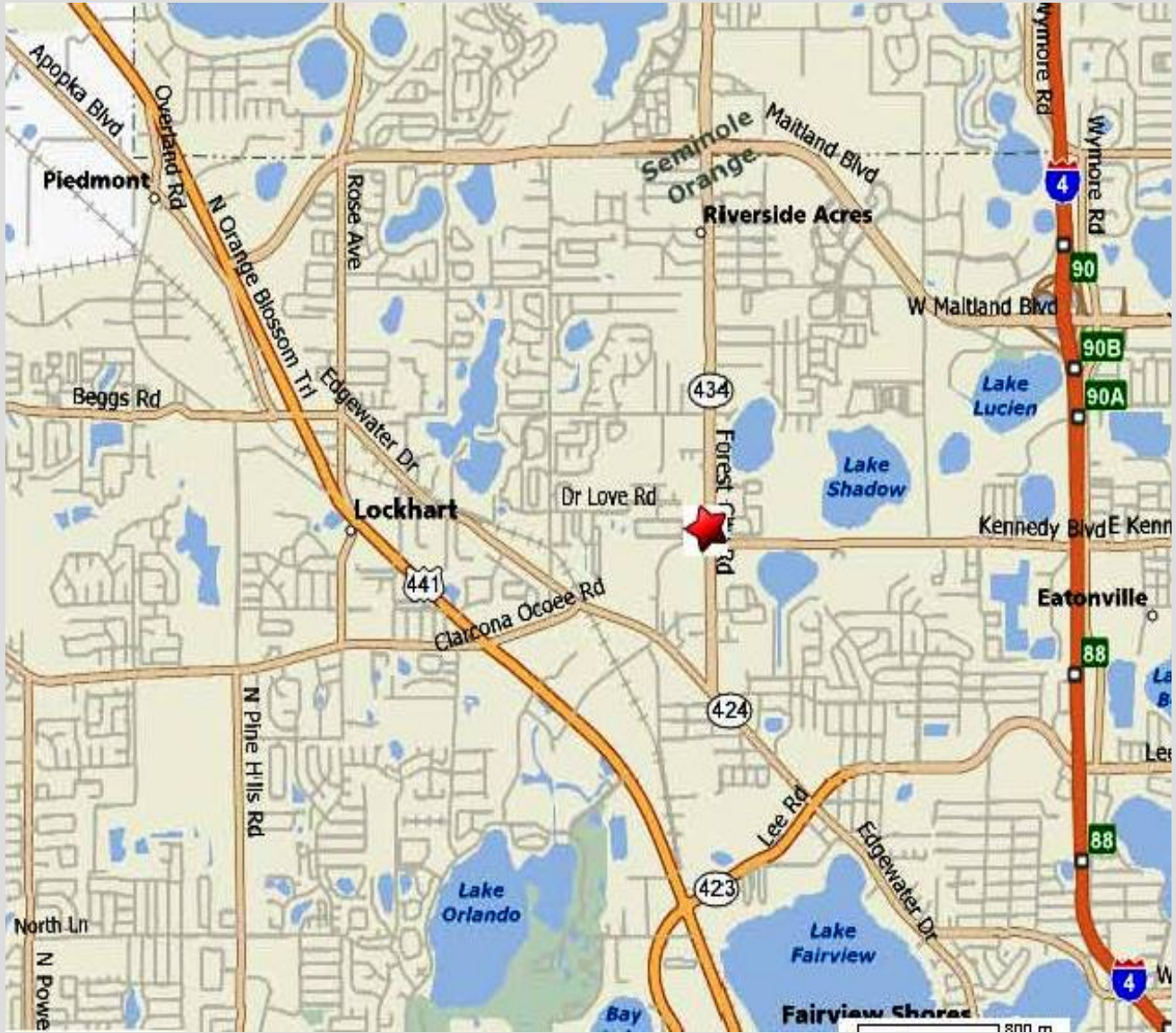


**RESULTS REAL ESTATE PARTNERS, LLC**  
Licensed Commercial Real Estate Brokers

108 Commerce St, Suite 200  
Lake Mary, FL 32746  
Office (407) 647-0200  
Fax (407) 647-0205  
**www.ResultsREPartners.com**

This information is from sources we deem reliable and is subject to prior sale, lease, withdrawal without notice, or change in prices, rates, or conditions. No representation is made as to the accuracy of any information furnished.

## AREA MAP



### CONTACT:

**Jeff Gindi, Broker/Principal**  
**(407) 925-4464**

**JeffGindi@ResultsREPartners.com**



**RESULTS REAL ESTATE PARTNERS, LLC**  
Licensed Commercial Real Estate Brokers

108 Commerce St, Suite 200  
Lake Mary, FL 32746  
Office (407) 647-0200  
Fax (407) 647-0205  
**www.ResultsREPartners.com**

This information is from sources we deem reliable and is subject to prior sale, lease, withdrawal without notice, or change in prices, rates, or conditions. No representation is made as to the accuracy of any information furnished.

## AERIAL VIEW



### CONTACT:

**Jeff Gindi, Broker/Principal**  
**(407) 925-4464**  
**JeffGindi@ResultsREPartners.com**



**RESULTS REAL ESTATE PARTNERS, LLC**  
Licensed Commercial Real Estate Brokers

108 Commerce St, Suite 200  
Lake Mary, FL 32746  
Office (407) 647-0200  
Fax (407) 647-0205  
**www.ResultsREPartners.com**

This information is from sources we deem reliable and is subject to prior sale, lease, withdrawal without notice, or change in prices, rates, or conditions. No representation is made as to the accuracy of any information furnished.