

AVAILABLE

Automotive Repair Facility for SALE or LEASE 5625 W. Colonial Drive Orlando, FL 32080



PROPERTY FEATURES:

- 6,165 SF (8 Bays)
- 35,000 SF Site with C-1 Zoning
- Large Showroom and Customer Waiting Area
- Building with Pylon Signage in Explosive Retail / Service Area
- Located at the Intersection of W. Colonial and Hastings
- Ample Parking and 3 Phase Power
- Demographics Available by Request
- Existing Equipment and Air-lines in Place

Sale Price

\$1,200,000

Lease Amount

\$7,500.00 NNN

CONTACT:

Vincent F. Wolle, CCIM, SIOR
Cell (407) 448-1823

VWolle@ResultsREPartners.com

or

Rebecca Anderson Caspari
Office (407) 647-0200
Rebecca@ResultsREPartners.com

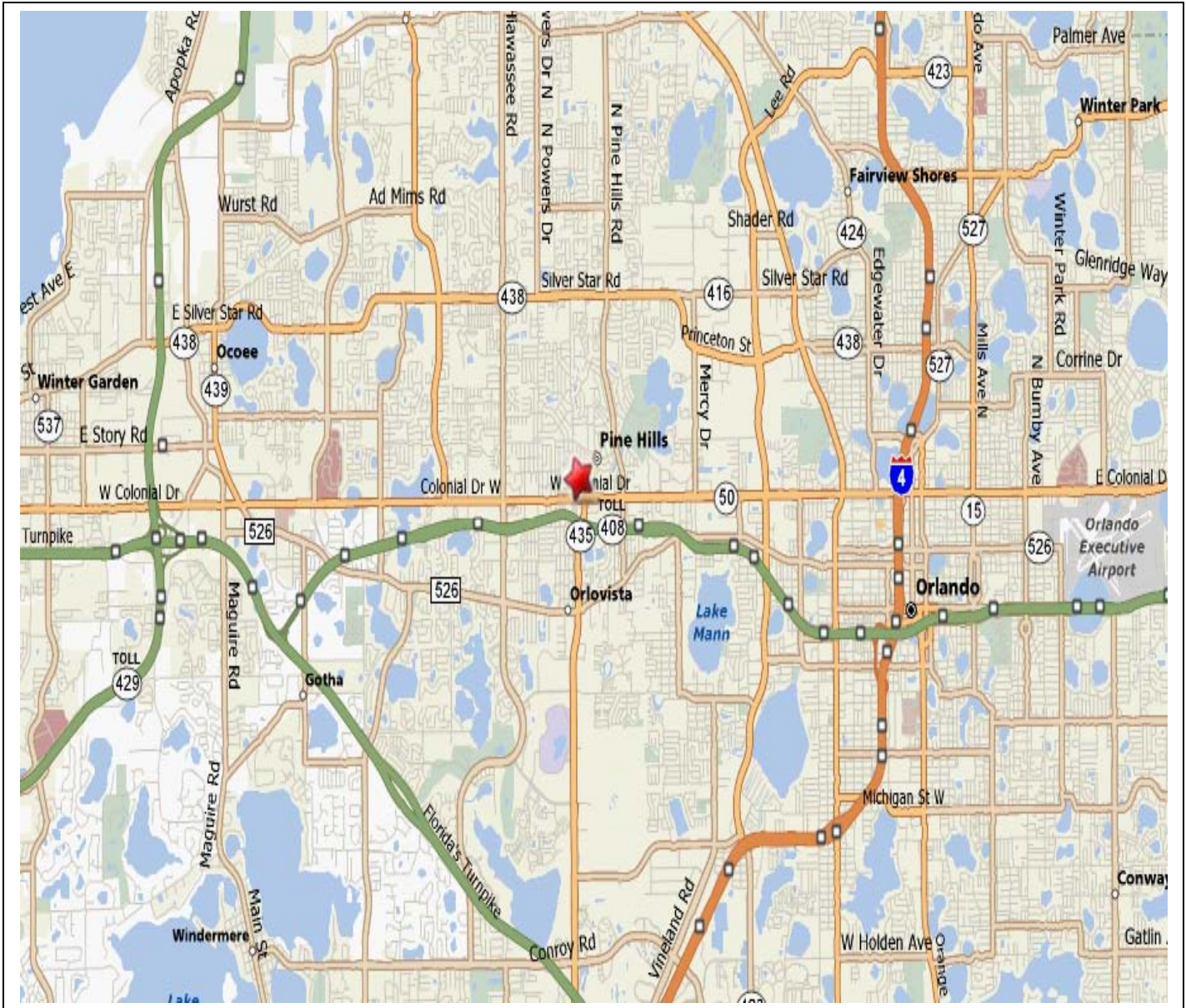


RESULTS REAL ESTATE PARTNERS, LLC
Licensed Commercial Real Estate Brokers

108 Commerce St, Suite 200
Lake Mary, FL 32746
Office (407) 647-0200
Fax (407) 647-0205
www.ResultsREPartners.com

This information is from sources we deem reliable and is subject to prior sale, lease, withdrawal without notice, or change in prices, rates, or conditions. No representation is made as to the accuracy of any information furnished.

Locator Map



Traffic Counts (Major Intersections)

- W. Colonial Dr.72,360 VPD

Close to Kirkman Road, SR 429, John Young Pwky, and 408

CONTACT:

Vincent F. Wolle, CCIM, SIOR
Cell (407) 448-1823

VWolle@ResultsREPartners.com

or

Rebecca Anderson Caspari
Office (407) 647-0200

Rebecca@ResultsREPartners.com

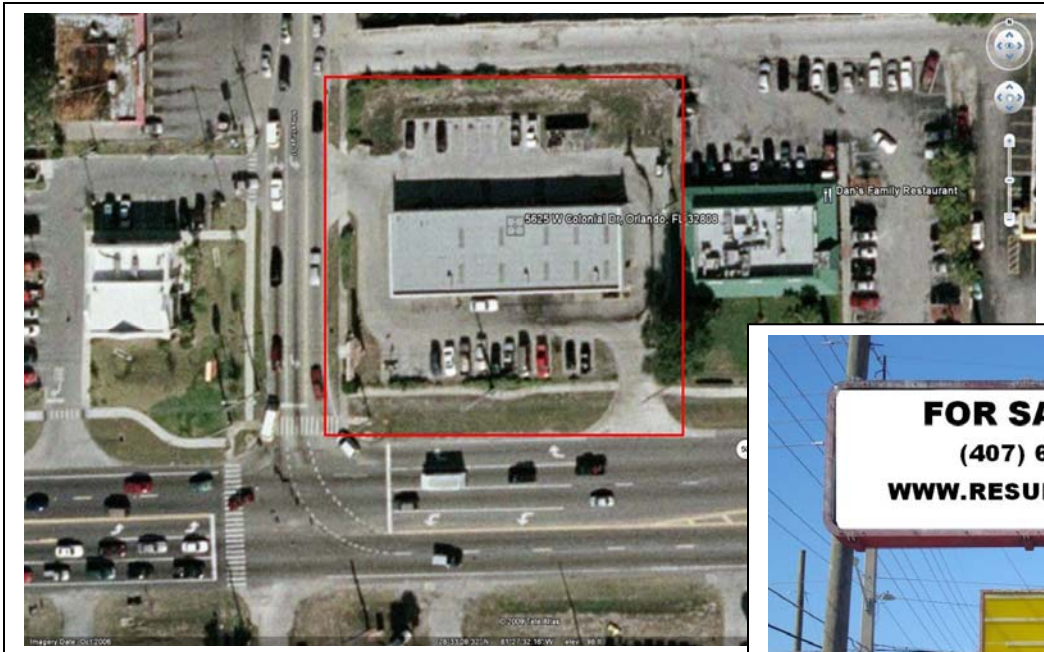


RESULTS REAL ESTATE PARTNERS, LLC
Licensed Commercial Real Estate Brokers

108 Commerce St, Suite 200
Lake Mary, FL 32746
Office (407) 647-0200
Fax (407) 647-0205
www.ResultsREPartners.com

This information is from sources we deem reliable and is subject to prior sale, lease, withdrawal without notice, or change in prices, rates, or conditions. No representation is made as to the accuracy of any information furnished.

Additional Pictures



RESULTS REAL ESTATE PARTNERS, LLC

Licensed Commercial Real Estate Brokers

108 Commerce St, Suite 200

Lake Mary, FL 32746

Office (407) 647-0200

Fax (407) 647-0205

www.ResultsREPartners.com

Vincent F. Wolle, CCIM, SIOR

Office (407) 647-0200

Cell (407) 448-1823

VWolle@ResultsREPartners.com

This information is from sources we deem reliable and is subject to prior sale, lease, withdrawal without notice, or change in prices, rates, or conditions. No representation is made as to the accuracy of any information furnished.