

# FOR LEASE

**100% AC OFFICE WAREHOUSE IN ORLANDO CENTRAL PARK  
1620-1624 PREMIER ROW ORLANDO, FL 32809**



## **FACILITY DETAILS:**

- (2) Suites Totaling 11,000 SF for Lease
- 23,110 SF Building on 1.55 Acres
- 1620 Premier Row: 6,300 SF with 1,000 SF of office and 1 dock door (former Church Space)
- 1624 Premier Row: 5,500 SF with 500 SF of office & 1 dock door
- Can be combined: 11,800 SF with 1,500 SF of office & 2 docks
- 9'6" to 11' Clear Height and 400 Amp 3 Phase Power
- Zoned I-2/I-3 Orange County with Ample Parking
- Great Manufacturing Space or Production Space
- Located near US 441, Sand Lake Road, SR 528, SR 408, the Florida Turnpike, & 4 miles from Orlando International Airport

## **Rental Amount**

**1620 Premier Row  
\$4,500 Gross**

**1624 Premier Row  
\$2,500 Gross**



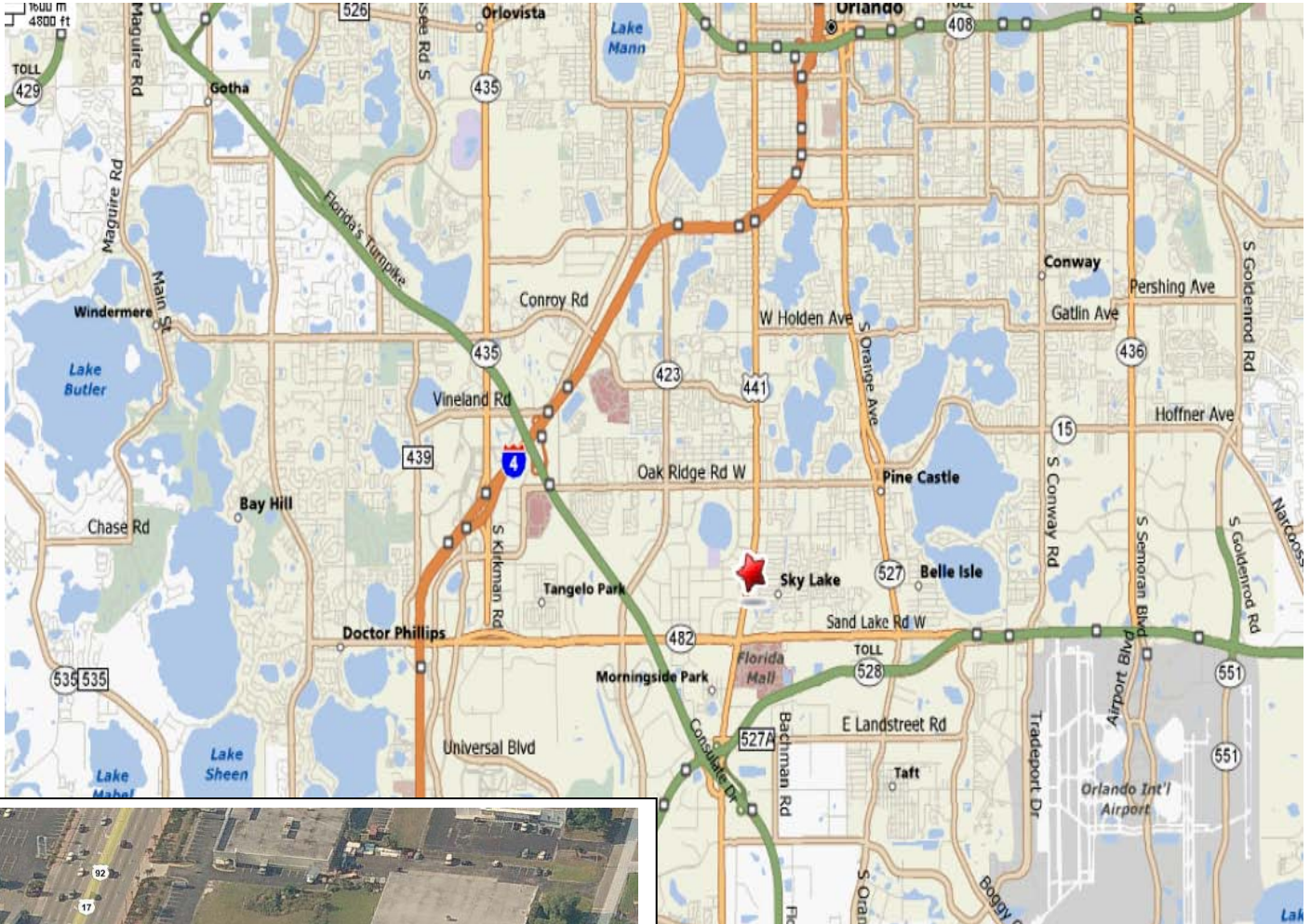
**RESULTS REAL ESTATE PARTNERS, LLC**  
Licensed Commercial Real Estate Brokers

108 Commerce St, Suite 200  
Lake Mary, FL 32746  
Office (407) 647-0200  
Fax (407) 647-0205  
[www.ResultsREPartners.com](http://www.ResultsREPartners.com)

## **CONTACT:**

**Vincent F. Wolle, CCIM, SIOR**  
Cell (407) 448-1823  
[vwolle@ResultsREPartners.com](mailto:vwolle@ResultsREPartners.com)

# LOCATOR MAP



## CONTACT:

**Vincent F. Wolle, CCIM, SIOR**  
**Cell (407) 448-1823**

[vwolle@ResultsREPartners.com](mailto:vwolle@ResultsREPartners.com)

- Located in Orlando Central Park



**RESULTS REAL ESTATE PARTNERS, LLC**  
Licensed Commercial Real Estate Brokers

108 Commerce St, Suite 200  
Lake Mary, FL 32746  
Office (407) 647-0200  
Fax (407) 647-0205  
[www.ResultsREPartners.com](http://www.ResultsREPartners.com)

This information is from sources we deem reliable and is subject to prior sale, lease, withdrawal without notice, or change in prices, rates, or conditions. No representation is made as to the accuracy of any information furnished.