

FOR LEASE

UP TO
14,750 SF
AVAILABLE

REGENCY INDUSTRIAL PARK WAREHOUSE/OFFICE
10201 ROCKET BOULEVARD
ORLANDO, FLORIDA 32824



PROPERTY FEATURES:

- **Suite 100: 10,500 SF (includes 1,100 SF of office)**
- **(2) 11' x 12' Grade Level Doors**
- **Suite 200: 4,250 SF (includes 750 SF of office)**
- **(1) 11'x12' Grade Level Door**
- **I-4 Zoning with Building Signage Available**
- **3 Phase Power 200 Amp Service**
- **Owner will modify space for a "Qualified Tenant"**
- **Suite 100 can be subdivided into (2) 5,250 SF units**
- **14' Clear Height "Free-span Warehouse"**
- **Ample Parking**
- **Close to 441, Orange Ave, 528, 408, & 417**
- **Motivated, "Bring All Offers"**

LEASE RATE:
\$4.00 Gross

CONTACT:

Vincent F. Wolle, CCIM, SIOR
Cell (407) 448-1823
vwolle@ResultsREPartners.com

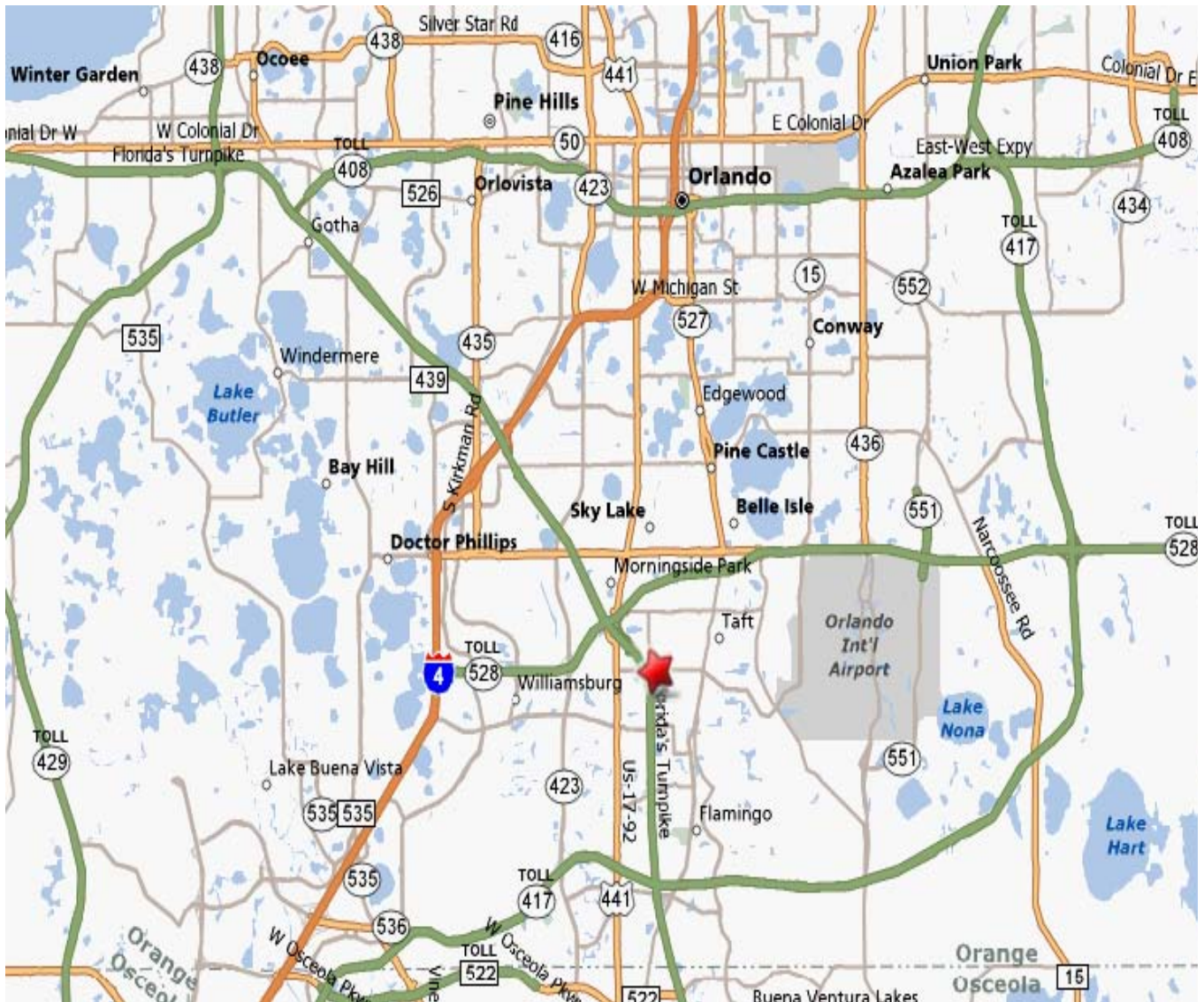


RESULTS REAL ESTATE PARTNERS, LLC
Licensed Commercial Real Estate Brokers

108 Commerce St, Suite 200
Lake Mary, FL 32746
Office (407) 647-0200
Fax (407) 647-0205
www.ResultsREPartners.com

This information is from sources we deem reliable and is subject to prior sale, lease, withdrawal without notice, or change in prices, rates, or conditions. No representation is made as to the accuracy of any information furnished.

AREA MAP



CONTACT:

Vincent F. Wolle, CCIM, SIOR
(407) 448-1823

VWolle@ResultsREPartners.com



RESULTS REAL ESTATE PARTNERS, LLC

Licensed Commercial Real Estate Brokers

108 Commerce St, Suite 200

Lake Mary, FL 32746

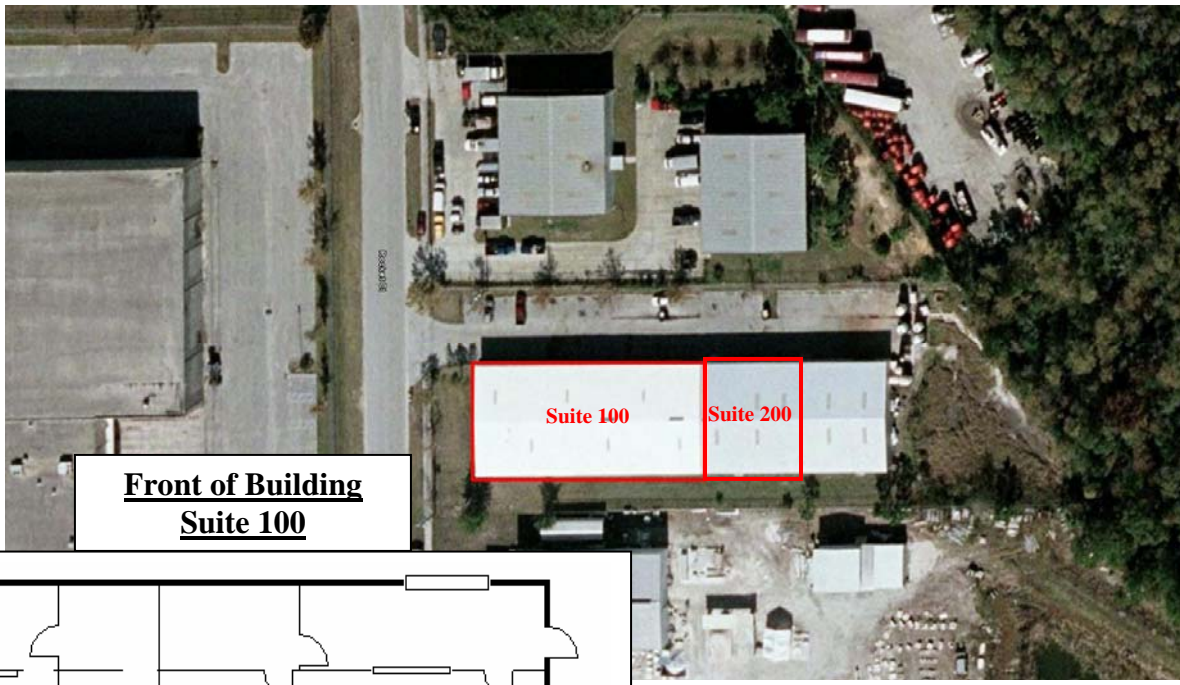
Office (407) 647-0200

Fax (407) 647-0205

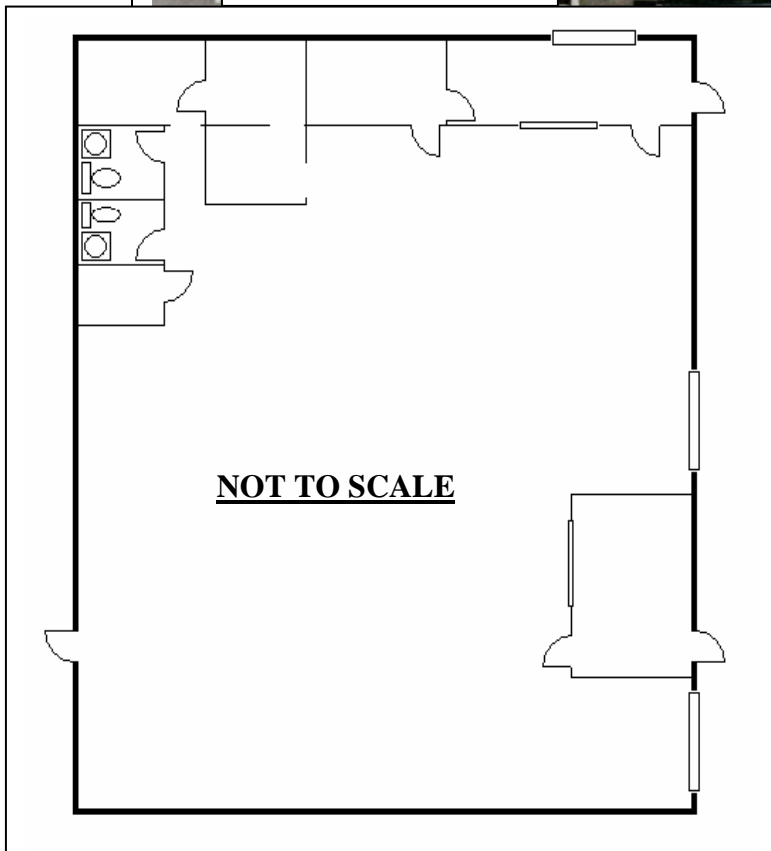
www.ResultsREPartners.com

This information is from sources we deem reliable and is subject to prior sale, lease, withdrawal without notice, or change in prices, rates, or conditions. No representation is made as to the accuracy of any information furnished.

LAYOUT & AERIAL



Front of Building
Suite 100



CONTACT:

Vincent F. Wolle, CCIM, SIOR
(407) 448-1823

VWolle@ResultsREPartners.com



RESULTS REAL ESTATE PARTNERS, LLC

Licensed Commercial Real Estate Brokers

108 Commerce St, Suite 200

Lake Mary, FL 32746

Office (407) 647-0200

Fax (407) 647-0205

www.ResultsREPartners.com

This information is from sources we deem reliable and is subject to prior sale, lease, withdrawal without notice, or change in prices, rates, or conditions. No representation is made as to the accuracy of any information furnished.