

**FOR
LEASE**

922 SLIGH BOULEVARD

ORLANDO, FL 32806



WAREHOUSE/MANUFACTURING



CONTACT
EXCLUSIVE BROKER

Jeff Gindi
407.925.4464 *mobile*

JeffGindi@ResultsREPartners.com

Results Real Estate Partners, LLC
Licensed Real Estate Brokers
108 Commerce Street, Suite 200
Lake Mary, Florida 32746

407.647.0200 *main*
407.647.0205 *fax*

www.ResultsREPartners.com

PROPERTY HIGHLIGHTS

- **12,000 SF total with 10% office built-out**
- **Heavy Electric Service in place**
- **(2) Overhead Doors**
- **Formerly cabinetry shop**
- **Spray Booth in place**
- **Lease: \$3,800/mo. NNN**

This information is from sources we deem reliable and is subject to prior sale, lease, withdrawal without notice, or change in prices, rates, or conditions. No representation is made as to the accuracy of any information furnished.

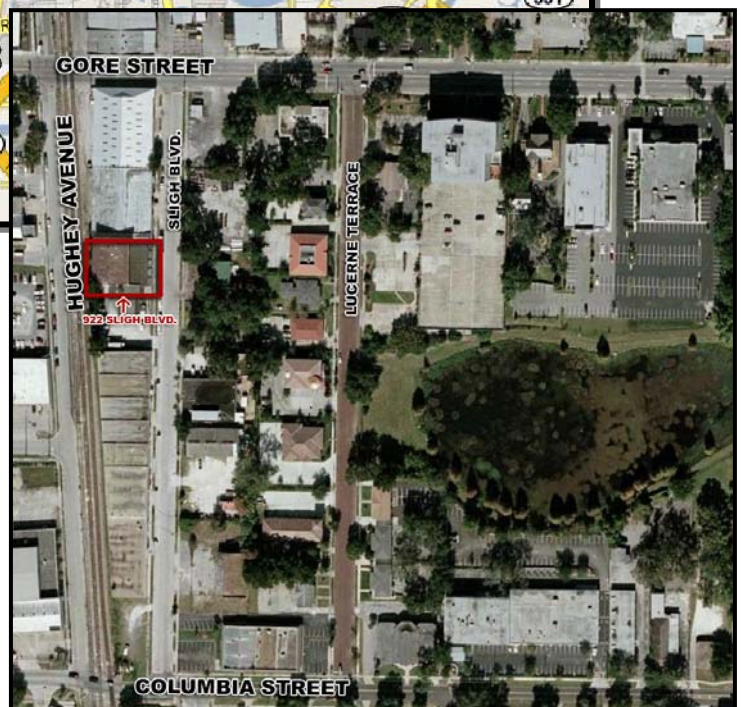
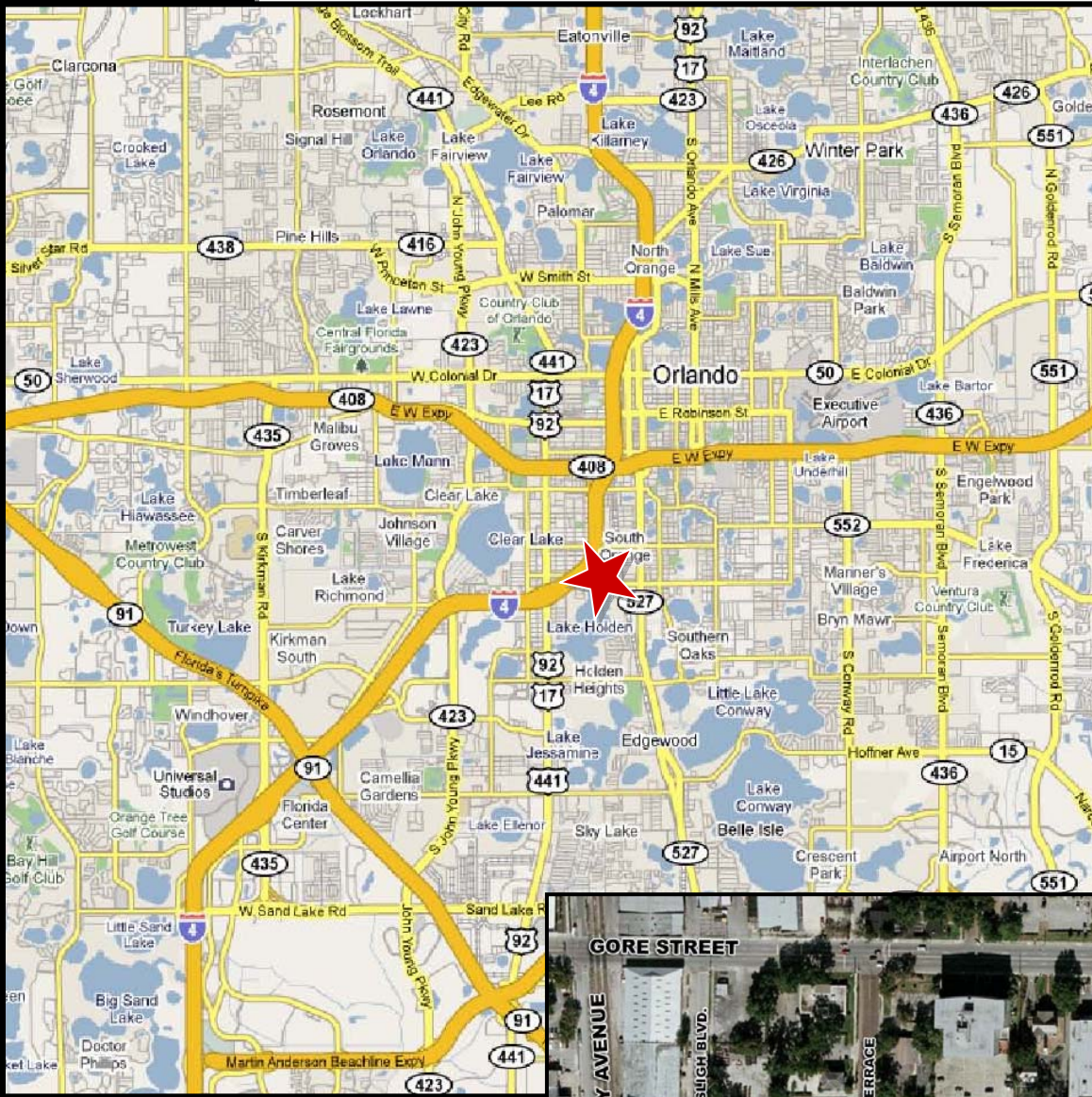
922 SLIGH BOULEVARD

ORLANDO, FL 32806

LOCATOR MAP



RESULTS
REAL ESTATE PARTNERS, LLC



Results Real Estate Partners, LLC
Licensed Real Estate Brokers
108 Commerce Street, Suite 200
Lake Mary, Florida 32746

407.647.0200 *main*
407.647.0205 *fax*

www.ResultsREPartners.com

This information is from sources we deem reliable and is subject to prior sale, lease, withdrawal without notice, or change in prices, rates, or conditions. No representation is made as to the accuracy of any information furnished.