

FOR LEASE

5655 E. COLONIAL DRIVE
ORLANDO, FL 32807



FREESTANDING AUTO REPAIR



PROPERTY HIGHLIGHTS

- **3,950 SF (5 Bay) Configuration**
- **11,449 SF C-2 Zoning with Ample Parking**
- **15' Ceiling Height with Large Working Area in Bays**
- **Water and Sewer at the Site**
- **Close to: SR 436, I-4, 408, Goldenrod Rd, Lake Underhill Rd, & Bennett Road**
- **Less than 200' Away from the Major Intersection of State Road 436 on HW 17-92**
- **Lease Rate: \$4,000/month, NNN**

CONTACT

Vincent F. Wolle, CCIM, SIOR
407.448.1823 *mobile*
VWolle@ResultsREPartners.com

Michelle F. Jimenez
407.535.6139 *mobile*
Michelle@ResultsREPartners.com

Results Real Estate Partners, LLC
Licensed Real Estate Brokers
108 Commerce Street, Suite 200
Lake Mary, Florida 32746

407.647.0200 *main*
407.647.0205 *fax*

www.ResultsREPartners.com

TRAFFIC COUNTS

Colonial Drive:	65,341	
SR 436:	62,721	
	<u>3 mile</u>	<u>5 mile</u>
Population:	99,615	253,540
Income:	\$50.805	\$59.823

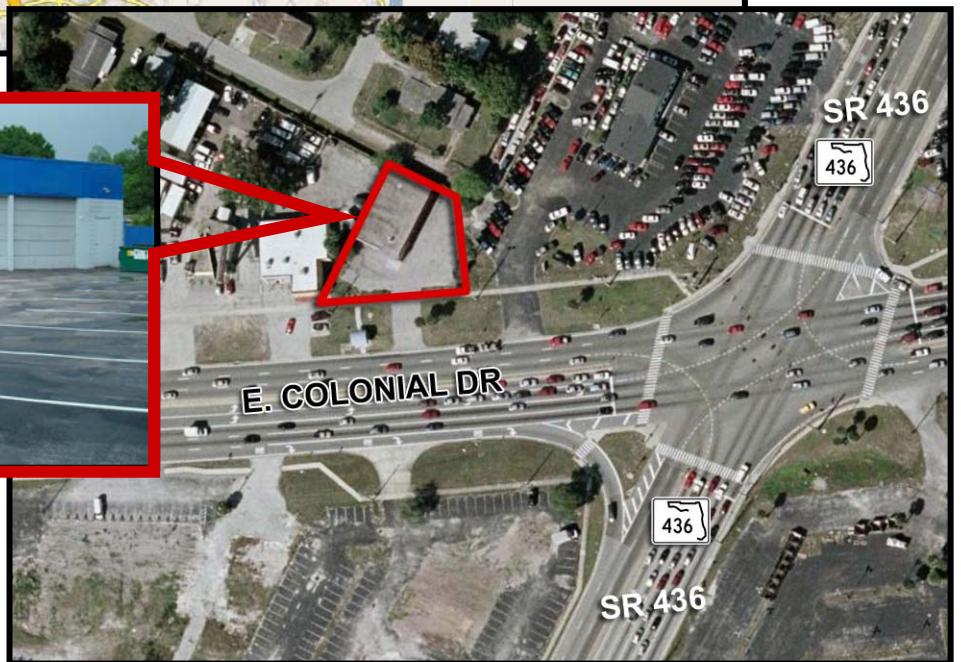
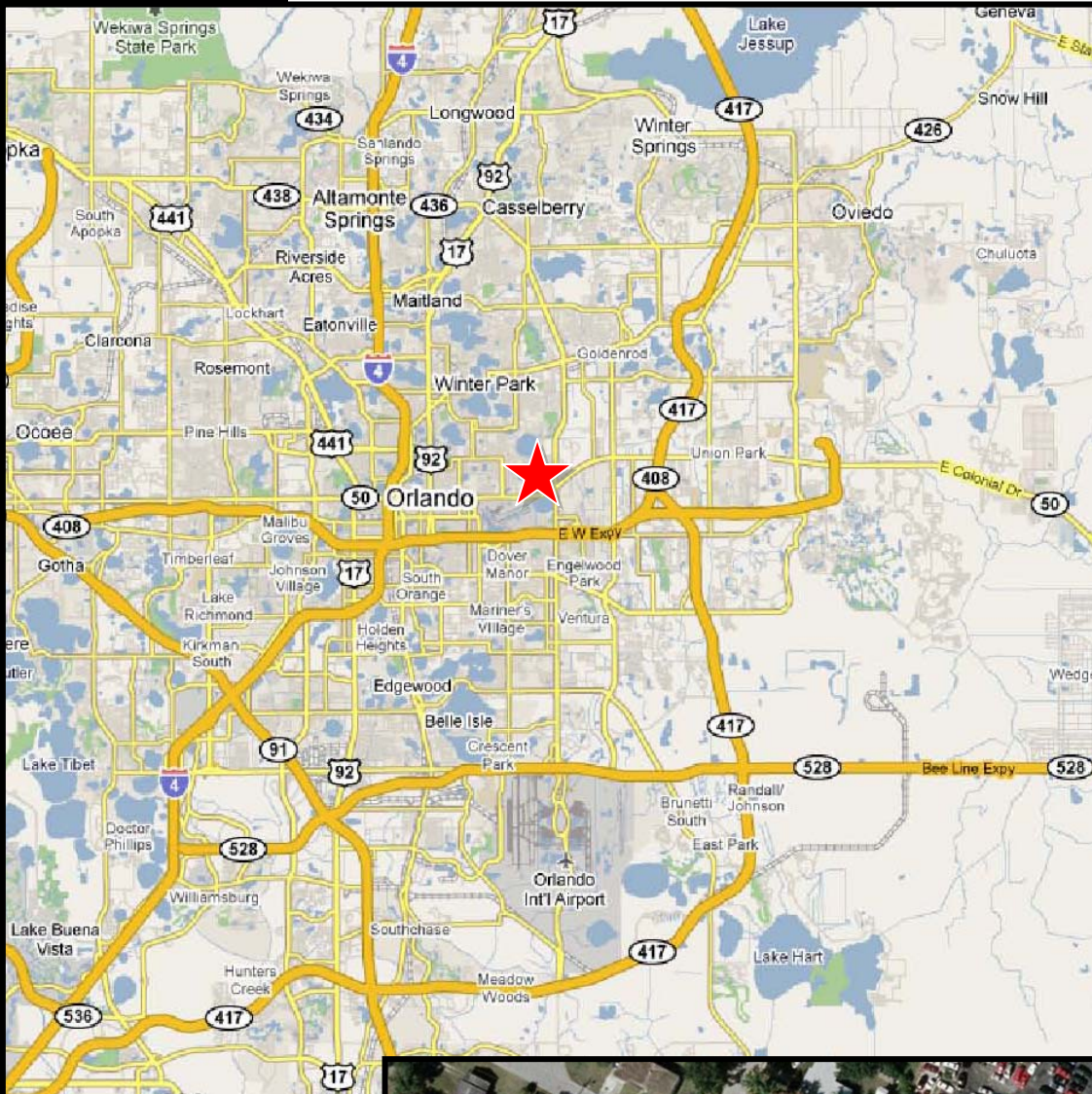
This information is from sources we deem reliable and is subject to prior sale, lease, withdrawal without notice, or change in prices, rates, or conditions. No representation is made as to the accuracy of any information furnished.

5655 E. COLONIAL DRIVE

ORLANDO, FL 32807



RESULTS
REAL ESTATE PARTNERS, LLC



This information is from sources we deem reliable and is subject to prior sale, lease, withdrawal without notice, or change in prices, rates, or conditions. No representation is made as to the accuracy of any information furnished.